



65PLC

LISTE DE PIÈCES PARTS LIST

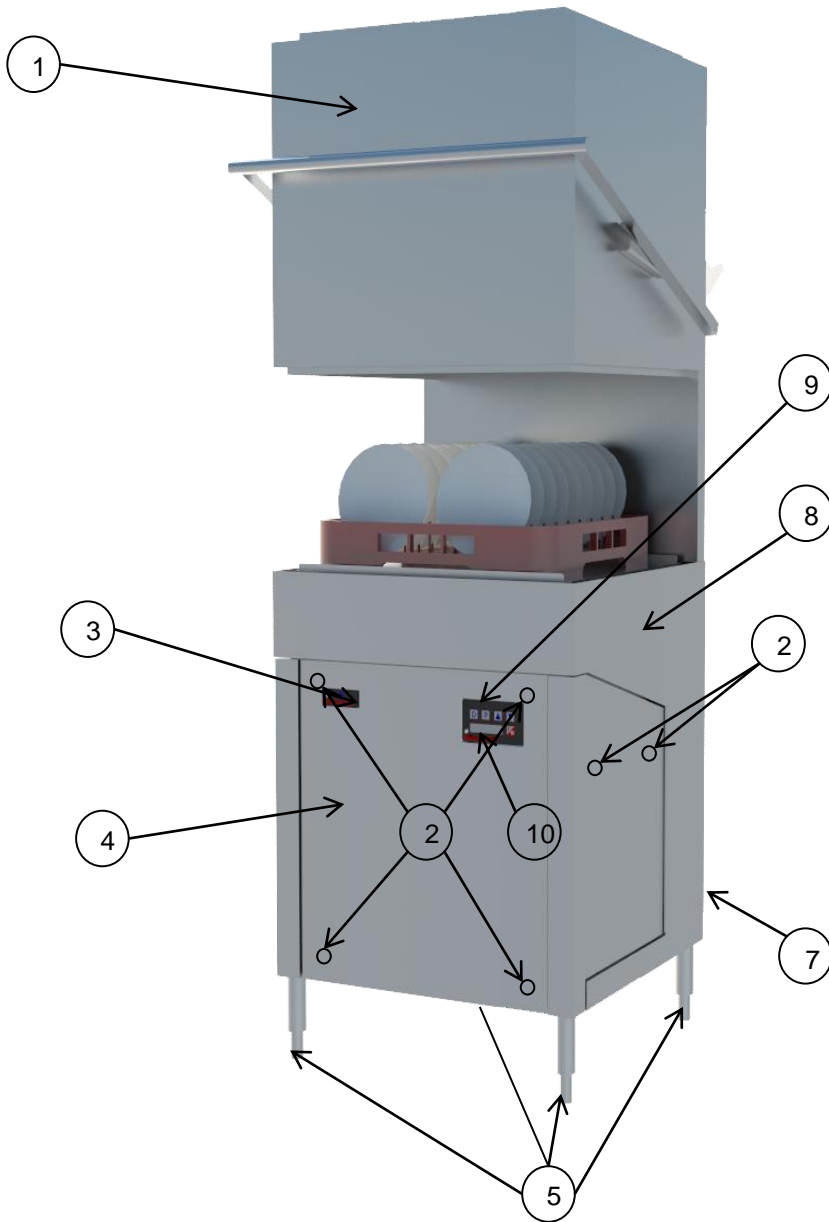
SWISSH COMMERCIAL EQUIPMENT INC
6060 Metropolitan E., Suite 200
Montreal, QC H1S 1A9

www.swissh.ca

Tel: 514-524-6005
Toll Free: 1-888-SWISSH9
Fax: 514-524-3305

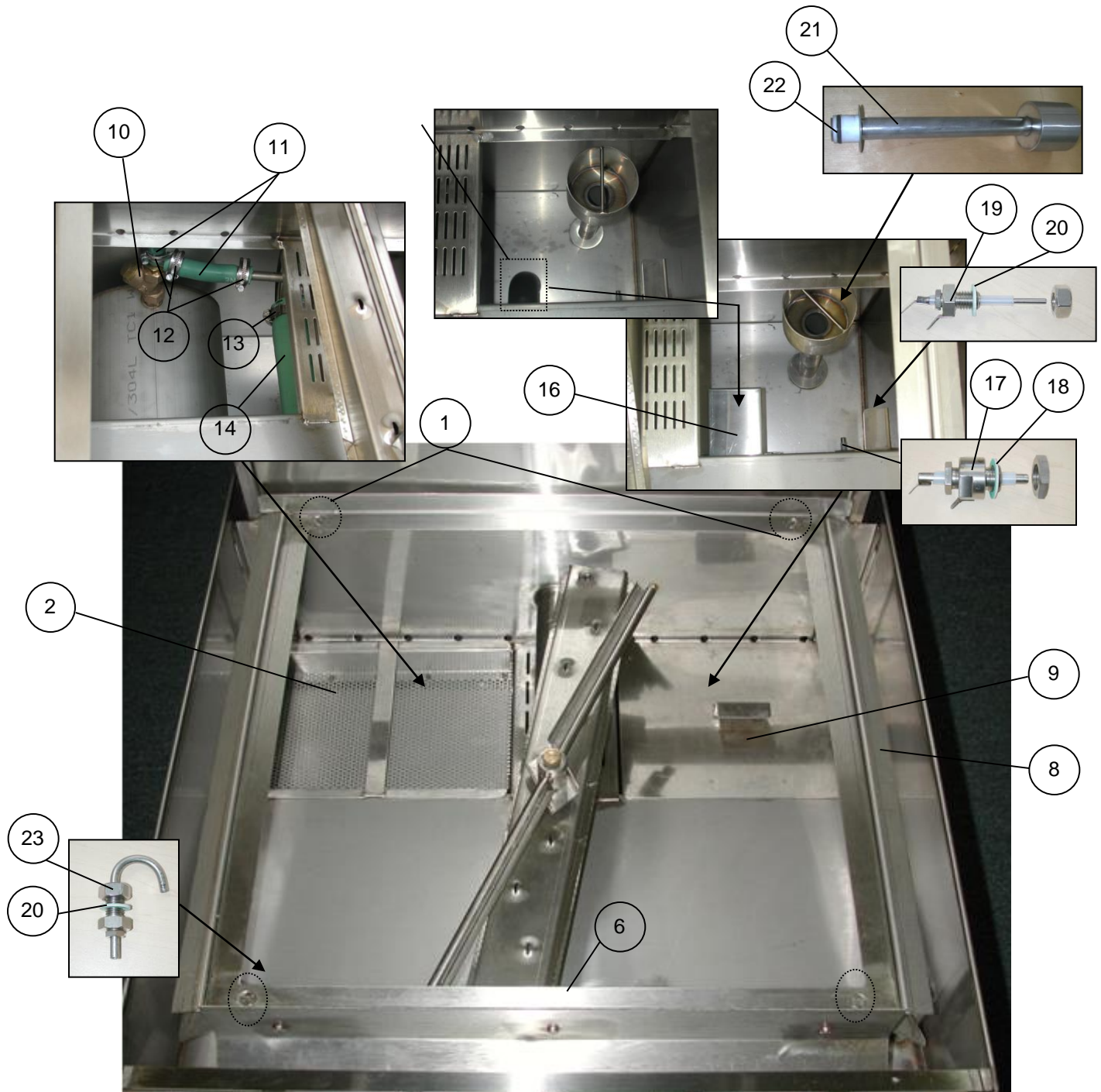
info@swissh.ca

EXTERIOR EXTÉRIEUR



- 1) GP68.0 Hood for 65 Series
- 2) SW01.5 M4 Flathead screw for Side Pannel
- 3) SW01.0 Swissh sign plate
- 4) GP67.0 Front Pannel 65 Series
- 5) GP87.0 Pied pour P 45/65 1 1/2
- 7) GP49.3 Geberit drain for 65 Series
- 8) SW00.2 65 Series Frame Assy.
- 9) SW01.01 Membrane Electronic 2002
- 10) SW01.6 Clear window front pannel
- 11) GP68.1 Hood Handle

LOWER INTERIOR SYSTEM SYSTEM INTERIEUR INFERIEUR

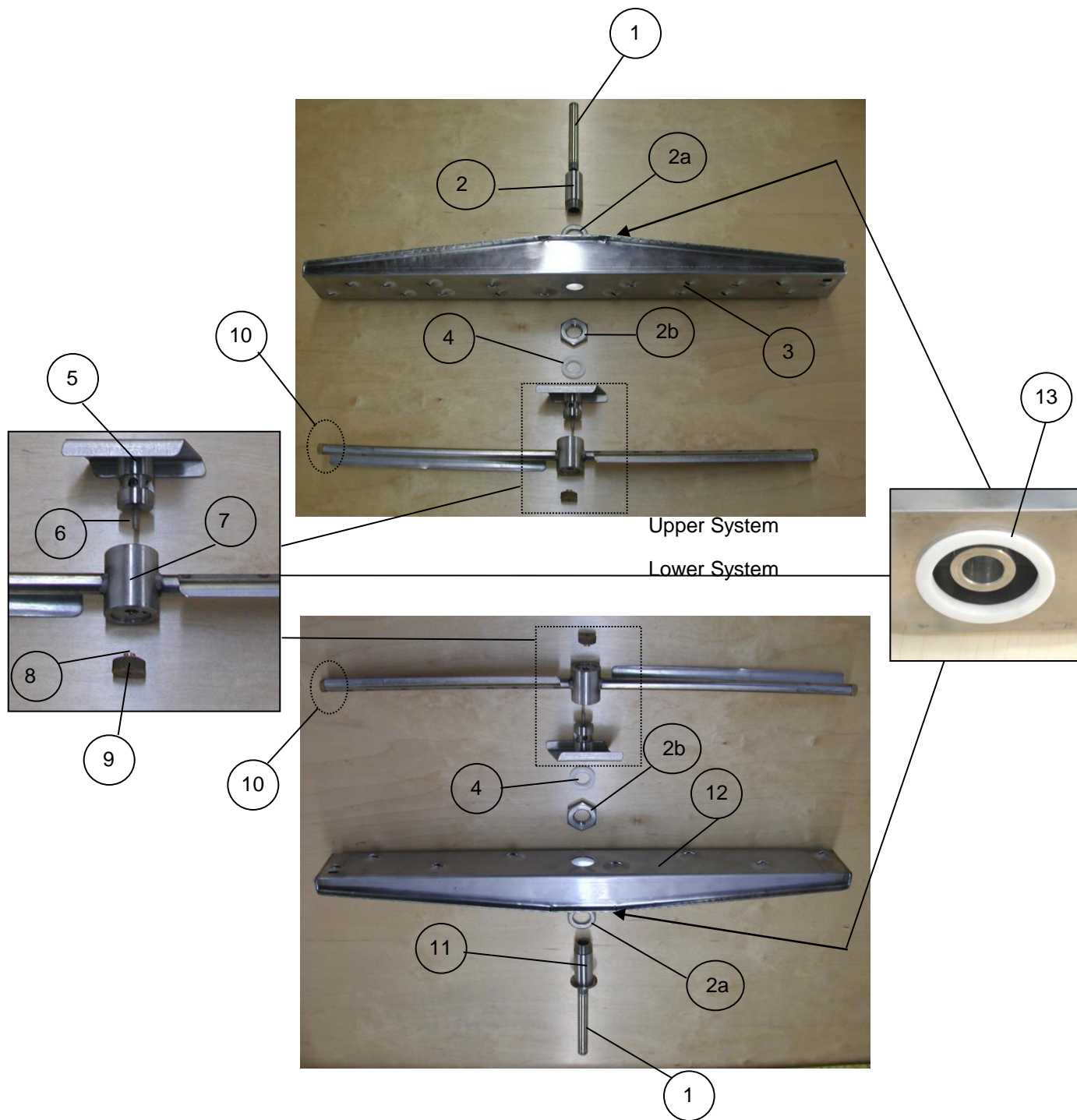


LOWER INTERIOR SYSTEM

SYSTEM INTERIEUR INFERIEUR

- 1) GP53.1 M6x16 mm Counter sunk screw & nuts
- 2) GP52.02 Skimmer filter 65 series
- 6) GP53.5 Guide rail for racks
- 7) GP92.1 Hood Switch Activator
- 9) GP55.1 Lid Cover
- 10) GP35.0 Dirt strainer booster 25/65
- 11) GP78.8 Topsil pressure hose ID13 x
- 12) GP79.0 Hose clamp CNS 14-24mm
- 13) SW80.1 Pump hose clamp 65i 52-76mm
- 14) GP78.0 Pump hose 55mm 65
- 15) GP53.1 Geberit 90° - 65 series
- 16) GP53.0 Filter to Washmotor 65
- 17) GP94.4 Suds Sensor Probe
- 18) GP94.41 Gasket for suds probe 1-1/4"x13/16
- 19) GP95.1 Water-Level Sensor Probe
- 20) GP03.0 Gasket "Garlock" 1/2"
- 21) GP50.0 Over Flow with O-ring 65
- 22) GP51.0 O-ring for Overflow
- 23) GP14.6 Injector M12 x 16

RINSE & WASH ARM ASSEMBLY ASSEMBLAGE DU BRAS DE RINÇAGE ET DE LAVAGE

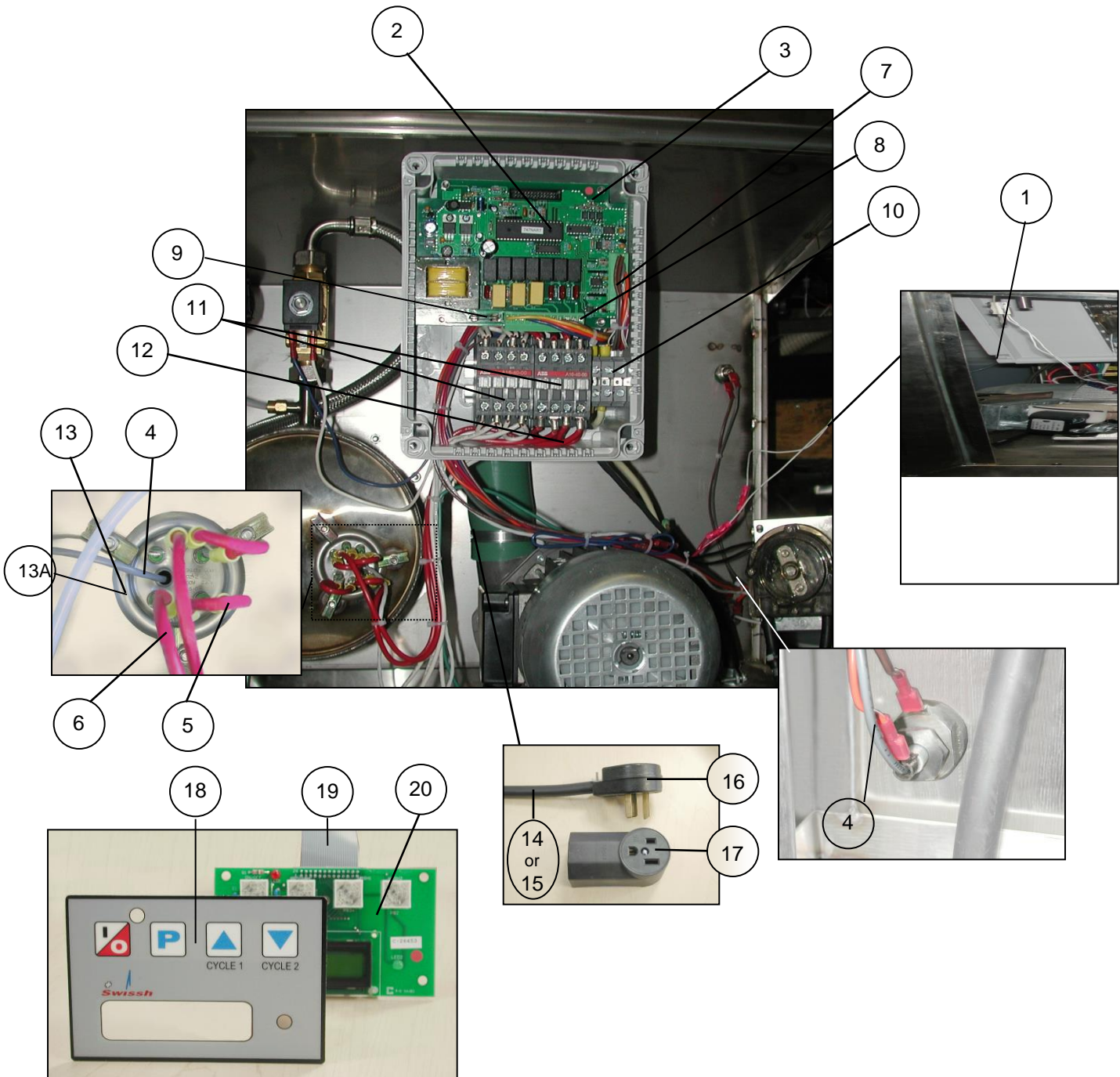


RINSE & WASH ARM ASSEMBLY

ASSEMBLAGE DU BRAS DE RINÇAGE ET DE LAVAGE

- 1) GP42.8 Axe CNS Washarm 65
- 2) GP43.1 Bushing CNS 65; 50x20/12, G3/8 TOP
- 2a) GP43.3 Washer For Bushing S/S
- 2b) GP43.4 Nut For Bushing S/S
- 3) GP47.2 Upper Washarm 65
- 4) GP43.8 Nylon washer 65PLC 24x13x2.5mm
- 5) GP36.11 Rinse Axle 65 with Lock Plate
- 6) GP37.01 Rinse axle screw M3 x 12
- 7) GP39.0 Rinse Arm 25 & 65
- 8) GP37.1 Nylon Washer
- 9) GP37.0 Nut For Rinse Arm Brass
- 10) GP41.0 Threaded End Plug Rinse Arm M9
- 11) GP43.2 Lower Bushing CNS 50x 20/12, G3/8
- 12) GP47.3 Lower Washarm 65
- 13) GP43.9 Nylon Ring Washarm (white)

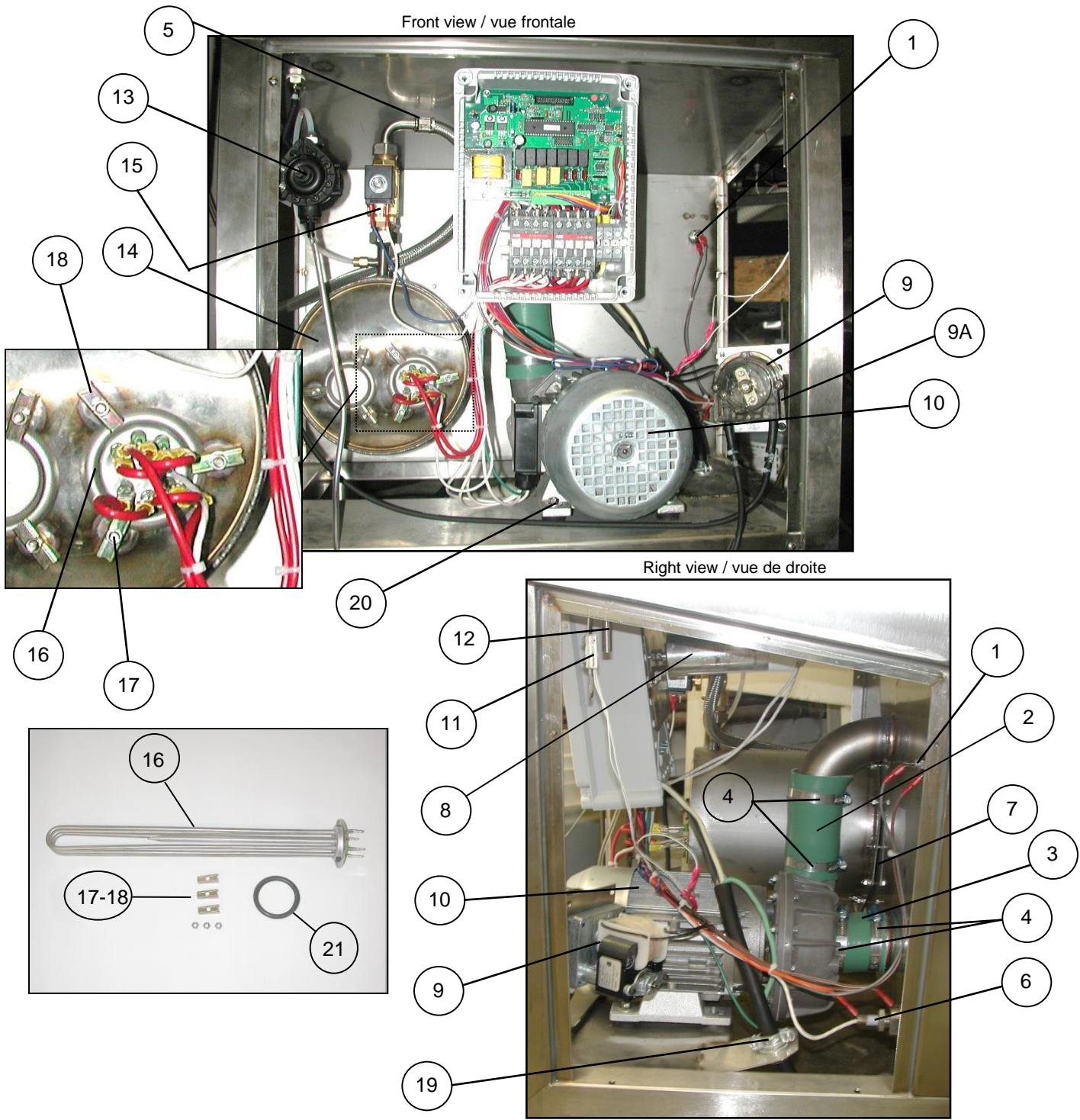
ELECTRONIC SYSTEM SYSTEM ÉLECTRONIQUE



ELECTRONIC SYSTEM SYSTEM ÉLECTRONIQUE

- 1) SW05.3 Reed door switch C&K 30V
- 2) GP94.86 MCU-DWC-2002
- 3) GP94.9 Electronic control unit DWC-2002
- 4) GP94.51 Temperature sensor for DWC
- 5) SW97.32 Heater element jumper 10mm
- 6) SW97.3 Heater cable 25 450mm
- 7) GP94.61 PCB connector (9pin) for DWC
- 8) GP94.71 PBC connector (12pin) for DWC
- 9) SW93.0 Fuse 1A (slow blow) 20mm
- 10) SW97.21 Bornier "Entrelec" M10x10
- 11) GP97.41 Contactor "ABB" A16-40
- 12) SW97.31 Contactor jumper 10mm
- GP31.0 Heater "EGO" 220V 6000W
- 13A) GP32.0 O'ring to "EGO" heater
- 14) SW02.4 Power cord AWG 10-3, 1 phase
- 15) SW02.41 Power cord AWG 10-4, 3 phase
- 16) SW02.1 Plug (male)
- 17) SW02.2 Plug (female)
- 18) SW01.01 Membrane electronic 2002
- 19) GP94.92 Ribbon cable (bus) for DWC-2002
- 20) GP94.91 Remote control board for DWC-2002

PUMP, MOTOR & BOOSTER SYSTEM POMPE, MOTEUR & SYSTEME SURCHAUFFEUR



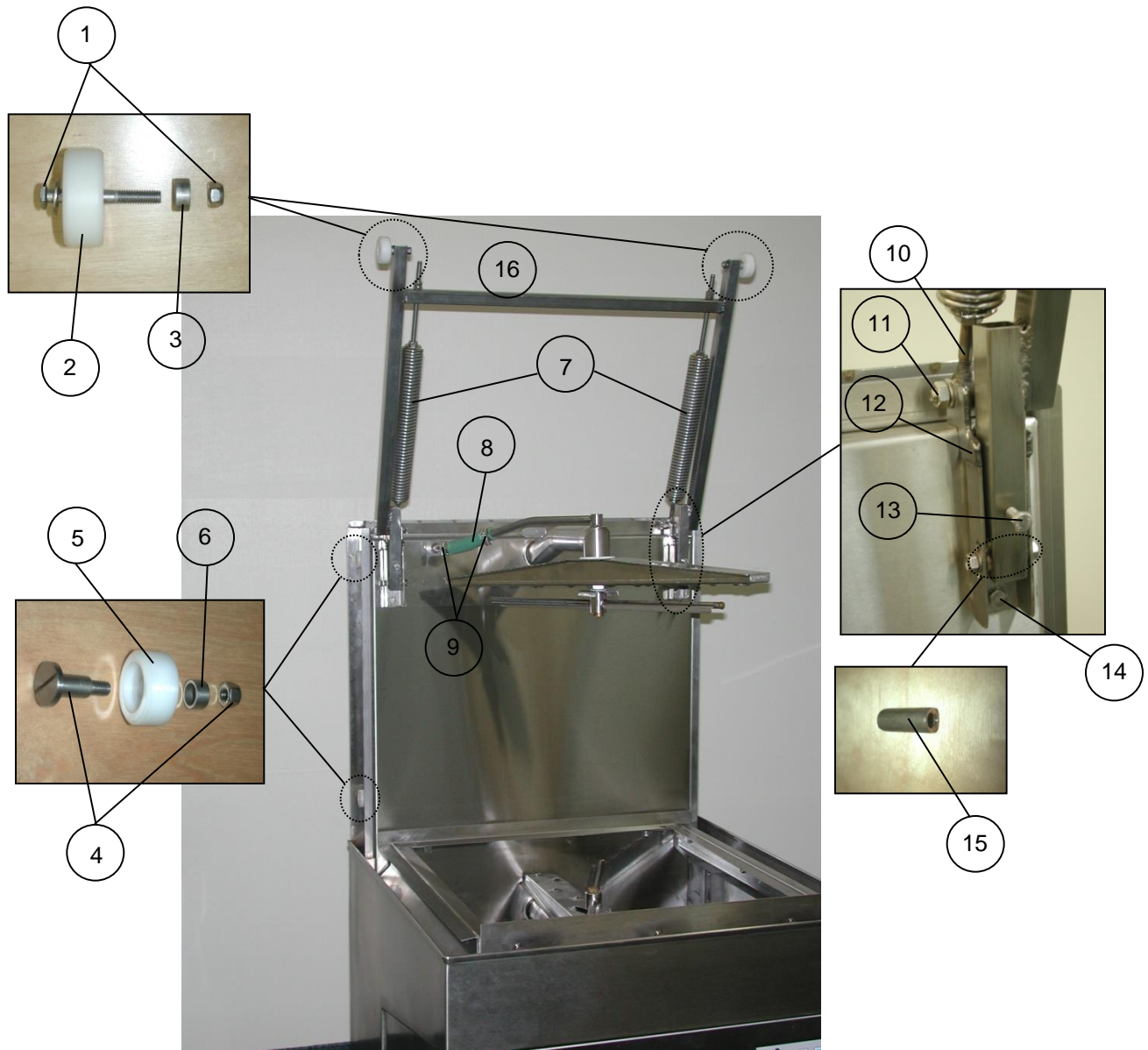
PUMP, MOTOR & BOOSTER SYSTEM

POMPE, MOTEUR & SYSTEME SURCHAUFFEUR

- 1) GP95.1 Water-Level Sensor Probe
- 2) GP78.0 Pump Hose 55mm 65
- 3) GP78.1 Pump Hose 64mm 65
- 4) SW80.1 Pump Hose Clamp 65 52-76mm
- 5) GP01.0 Metal Hose 1250mm
- 6) GP94.5 Temperature Sensor
- 7) GP23.1 O-ring Booster200mm
- 8) GP74.1 Motor Capacitor 31.5 micro 65
- 9) GP14.8 Detergent Pump SMF 4, 230V
- 9A) SW14.31 Pump Tubing "BETA"
- 10) GP72.9 Swissh 65 Pump/Motor Assy. FIR1241
- 11) SW05.3 Reed door switch C&K 30V
- 12) GP92.0 Hood Switch Crouzet
- 13) GP83.6 Rinse Pump Synthetic
- 14) GP23.0 Booster 65
- 15) GP06.11M Single Valve "MULLER" 3/4" White
- 16) GP31.0 Heater "EGO" 220V 6000W
- 16A) GP32.0 O'ring to "EGO" heater
- 17) GP33.1 Nut M5+ Washer I..
- 18) GP33.0 Fastener Brackets for "EGO"
- 19) SW02.3 3/4" Strain Relief for power cord 65
- 20) GP73.01 Hex-Nut M10 for Motor 65
- 21) GP32.0 O'Ring to "EGO" Heater
- 22) GP31.1 Blind Cap
- 23) GP73.0 Silent Block for 65 Motor



UPPER INTERIOR SYSTEM SYSTÈME INTÉRIEUR SUP

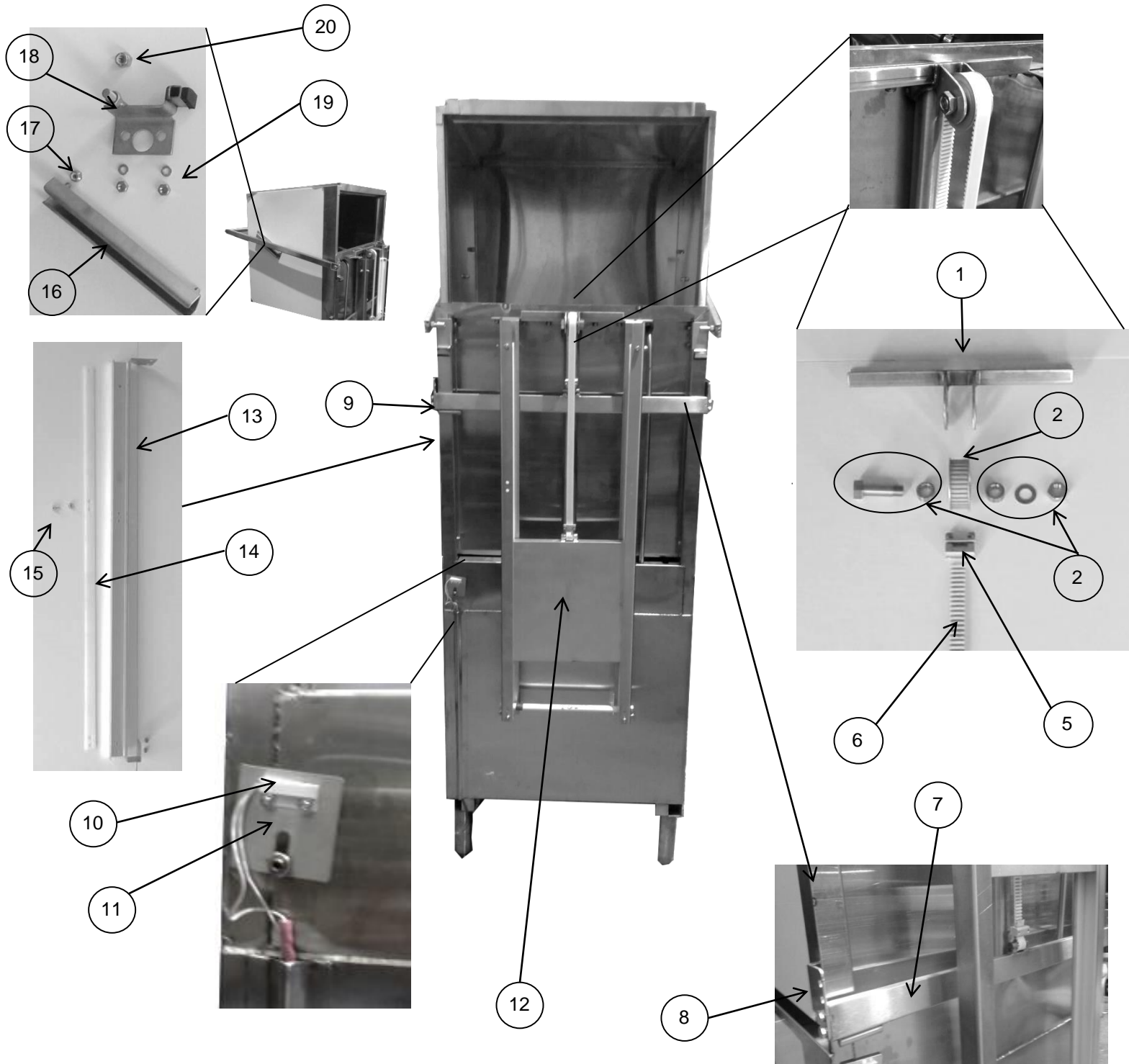


UPPER INTERIOR SYSTEM - SPRING

SYSTÈME INTÉRIEUR SUP

- 1) GP66.0 Screw & Spacer for Hood Roller
- 2) GP65.0 Roller for Hood
- 3) GP64.1 Spacer for Hood Roller
- 4) GP64.0 Screw & spcr. For Hood Guide Roller
- 5) GP63.0 Roller for Hood Guide
- 6) GP64.1 Spacer for Hood Guide Roller
- 7) GP61.0 Hood Spring 34mm Inox 65
- 8) GP78.8 Topsil Presusre Hose ID 13 X OD 26
- 9) SW79.0 HAS-8 Clamp
- 10) SW61.1 Left Hook for GP 61.0 – Rightside Hook SW61.2
- 11) GP60.2 Hex screws with nut axel
- 12) GP61.1 Holding Support for H Beam
- 13) GP60.3 Hex head adjusting screw
- 14) GP60.4 Hex head screw
- 15) GP61.2 Bushing for Hood
- 16) GP67.01 H Beam Hood roller support 65

UPPER INTERIOR SYSTEM - PULLEY SYSTÈME INTÉRIEUR SUP



SWISSH COMMERCIAL EQUIPMENT INC
6060 Metropolitan E., Suite 200, Montreal, QC H1S 1A9

Tel: 514-524-6005 / Fax: 514-524-3305 / info@swissh.ca

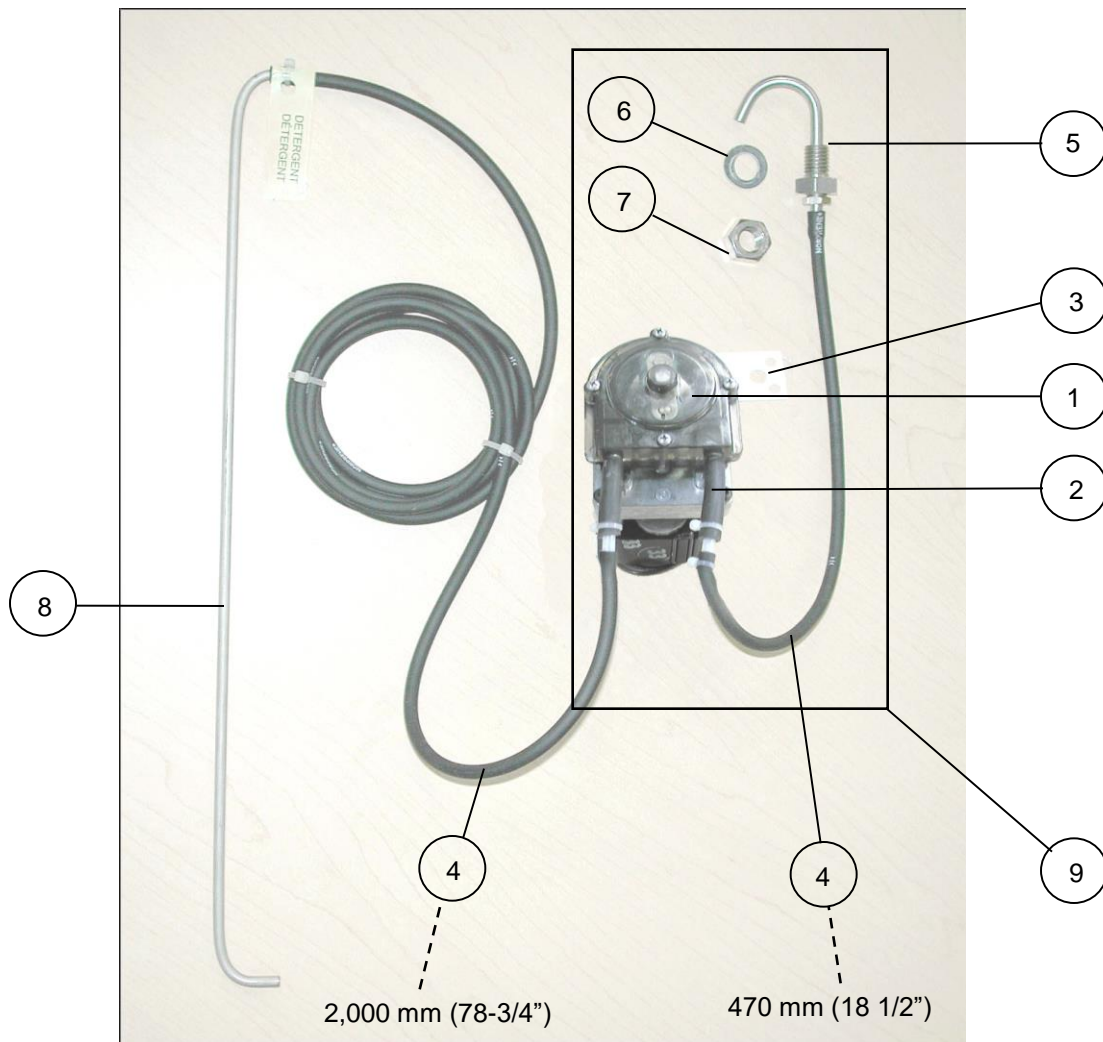


UPPER INTERIOR SYSTEM - PULLEY

SYSTÈME INTÉRIEUR SUP

1. GP65.5 Pulley Support
2. GP65.51 Pulley
3. GP65.52 Pulley Spacer
4. GP65.54 Strap Fastener
5. GP65.55 Counter Weight Strap
6. GP65.56 Counter Weight Bar
7. GP65.57 S/S Hex Screw 6mm
8. SW05.2 Door Switch Magnet
9. SW05.31 Bracket for Door Switch
10. GP65.1 Counter Weight For Hood
11. GP65.2 Guide Rail For Counter Weight
12. GP65.21 Teflon Guide Protect
13. GP65.22 Countersunk Head Screw With Lock Nut ¼ 20
14. GP65.3 Track
15. GP65.31 S/S Dome Nut for track ¼
16. GP65.41 Nut ¼ with washer
17. GP65.42 Lock Nut 3/8 16

DETERGENT DISPENSING SYSTEM SYSTÈME DISTRIBUTEUR DE DÉTERGE



- 1) SW14.30 Detergent pump "BETA"
- 2) SW14.31 Pump tubing "BETA"
- 3) SW14.32 Detergent pump bracket "BETA"
- 4) GP85.4 Norton norprene detergent hose
- 5) GP14.6 Injector M12 x 16; assy
- 6) GP03.0 Gasket "Garlock" 1/2"
- 7) GP14.61 Nut M12
- 8) GP85.1 Detergent/Rinse pipe Inox 470 mm/5 mm
- 9) SW06.2 * Solenoid replacement kit & pump (partial)

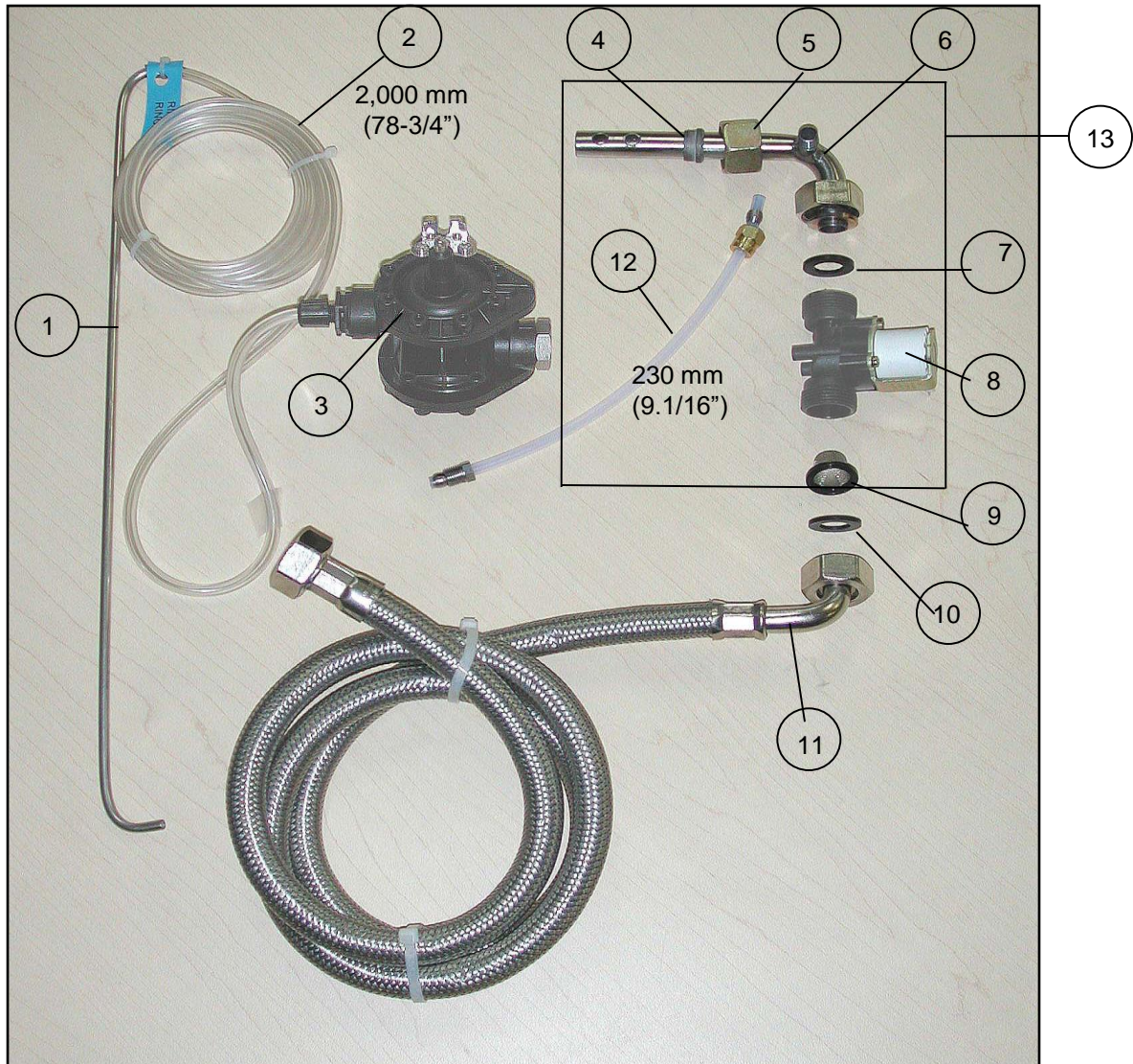
* See Filling & Rinse System

SWISSH COMMERCIAL EQUIPMENT INC
6060 Metropolitan E., Suite 200, Montreal, QC H1S 1A9

Tel: 514-524-6005 / Fax: 514-524-3305 / info@swishh.ca



FILLING & RINSE SYSTEM SYSTÈME DE REMPLISSAGE ET DE RINÇAGE



- | | |
|---|--|
| 1) GP85.1 Detergent/Rinse pipe Inox 420 mm/5 mm | 8) GP06.11 Single valve "ODE" |
| 2) GP85.3 PVC rinse 5 mm | 9) GP02.0 Filter 3/4" |
| 3) GP83.6 Rinse pump synthetic | 10) SW03.2 Gasket rubler 5/8" |
| 4) GP20.3 Tightening ring 14 mm 71DPR 14S | 11) GP01.0 Metal hose 1,250 mm |
| 5) GP20.4 Attachment screw E0 M15 PL | 12) GP83.61 PTFE rinse pump tube; assy |
| 6) GP19.9 Boiler entry tube 14 mm flanged | 13) SW06.2 * Solenoid replacement kit & pump (partial) |
| 7) SW03.3 Gasket "Garlock" 5/8" | |

* See Detergent Dispensing System

SWISSH COMMERCIAL EQUIPMENT INC
6060 Metropolitan E., Suite 200, Montreal, QC H1S 1A9

Tel: 514-524-6005 / Fax: 514-524-3305 / info@swishh.ca



RINSE PUMP AND RINSE TUBE FILTER POMPE DE RINCAGE ET FILTRE POUR TUBE INOX DE RINCAGE

INSTRUCTIONS

When installing a rinse pump, hold the large stainless steel nut with a 7/8" key when tightening the compression nut (10mm key). If not, the housing of the rinse pump can crack.

Pendant l'installation de la pompe de rinçage, tenir la grande noix inox avec une clé 7/8" et serrez la noix à compression avec une clé de (10mm), sinon le boîtier craquera.



.....

We suggest to install a filter on the rinse tube inlet (if not already installed) to protect the rinse pump from dirt.

Nous vous conseillons d'installer un filtre à l'entrée du tube inox de rinçage (si ce n'est pas déjà installé) pour protéger la pompe des saletés

GP85. 11
Filter for rinse inox tube
Filtre de rinçage pour tube à inox

