



# 25PLC

## LISTE DE PIÈCES PARTS LIST

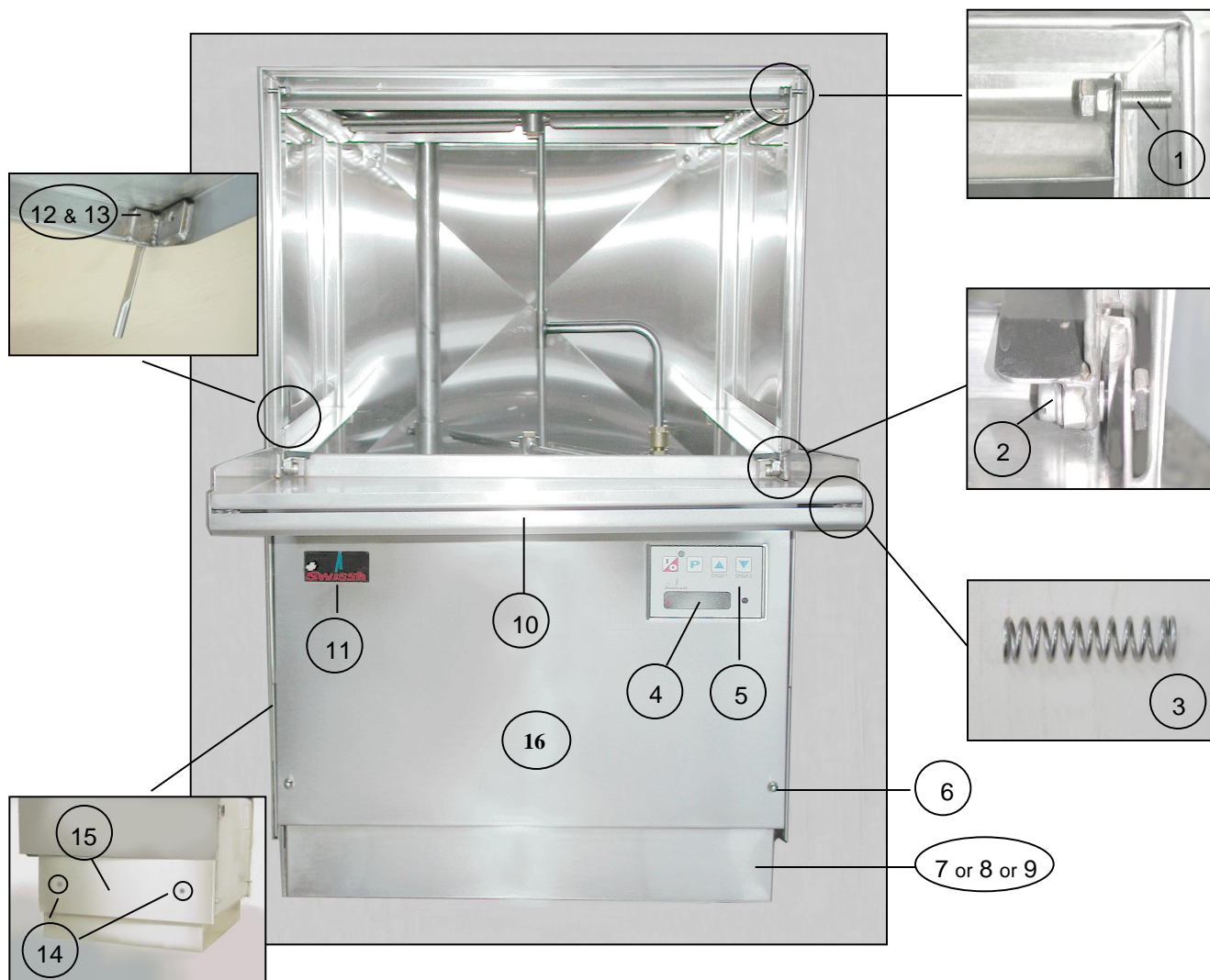
SWISSH COMMERCIAL EQUIPMENT INC  
6060 Metropolitan E., Suite 200  
Montreal, QC H1S 1A9

[www.swissh.ca](http://www.swissh.ca)

Tel: 514-524-6005  
Toll Free: 1-888-SWISSH9  
Fax: 514-524-3305

[info@swissh.ca](mailto:info@swissh.ca)

# FRONT VIEW VUE AVANT



- 1) GP59.0 Door lock screw M6 25i
- 2) GP60.0 Hinge bolt M8 25i
- 3) GP56.0 Door spring 8.5/30mm 25i
- 4) SW01.6 Clear window front panel
- 5) SW01.01 Membrane electronic 2002
- 6) SW01.4 Front panel dome nut M6
- 7) GP00.1 Add-on base 0mm 25i
- 8) GP00.2 Add on base 100mm 25i
- 9) GP00.3 Add on base 150mm 25i
- 10) GP58.0 Door handle 25 Series
- 11) SW01.0 Swissh sign plate
- 12) SW05.1 S/S door switch tube 25i; assy
- 13) SW05.2 Magnet for SW 05.1
- 14) SW01.5 M4 flathead screw for side panel
- 1) GP00.4 Side panel 25
- 2) SW01.1 Front panel

### **For door replacement of 25PLC**

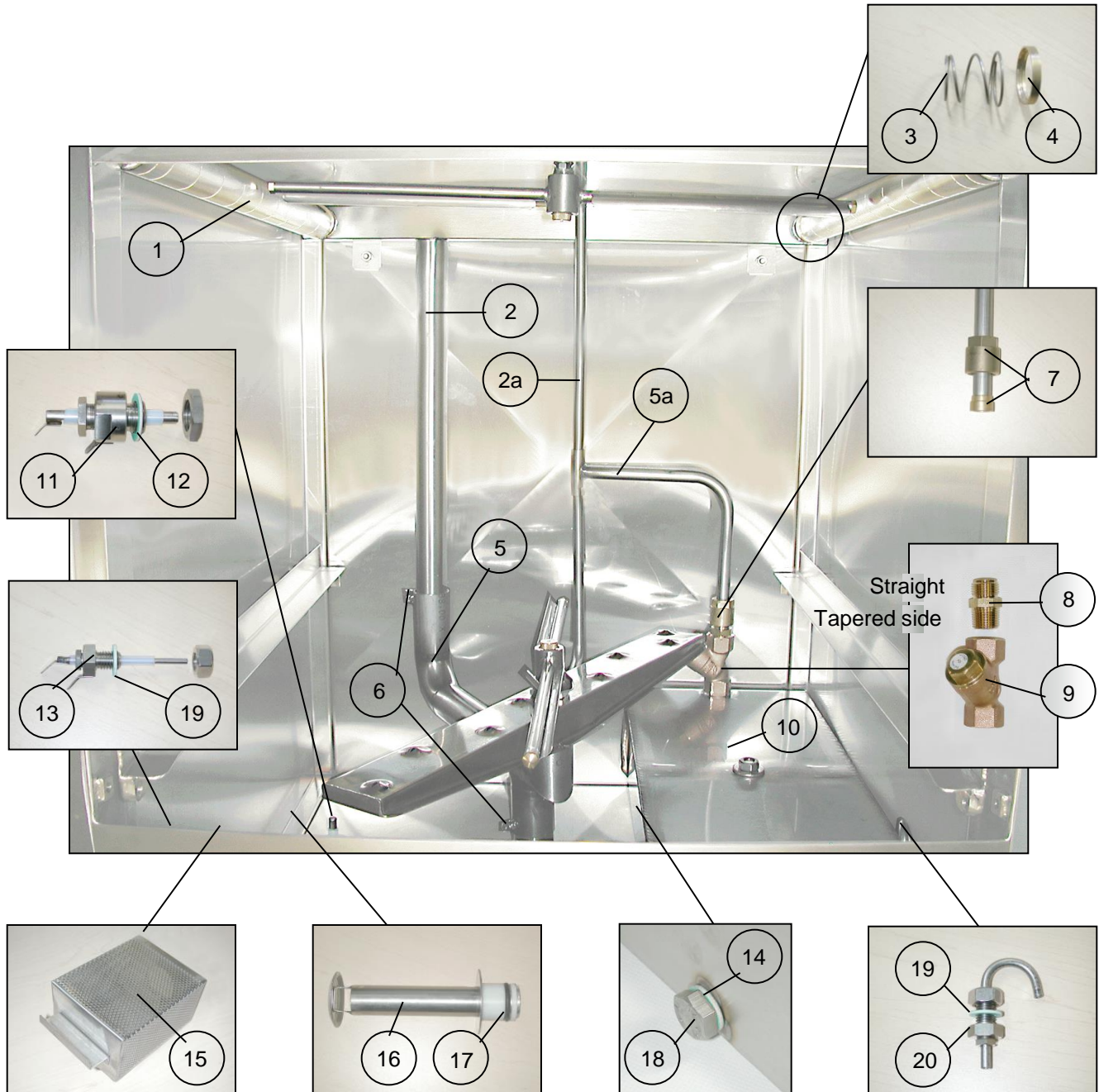
#### **Instructions:**

**2 x GP59.0 Door lock screws (M6)**

**2 x GP60.0 Door hinge bolts (M8)**

**GP58.1 New door 25PLC series**

# INTERIOR SYSTEM SYSTÈME INTÉRIEUR



# INTERIOR SYSTEM

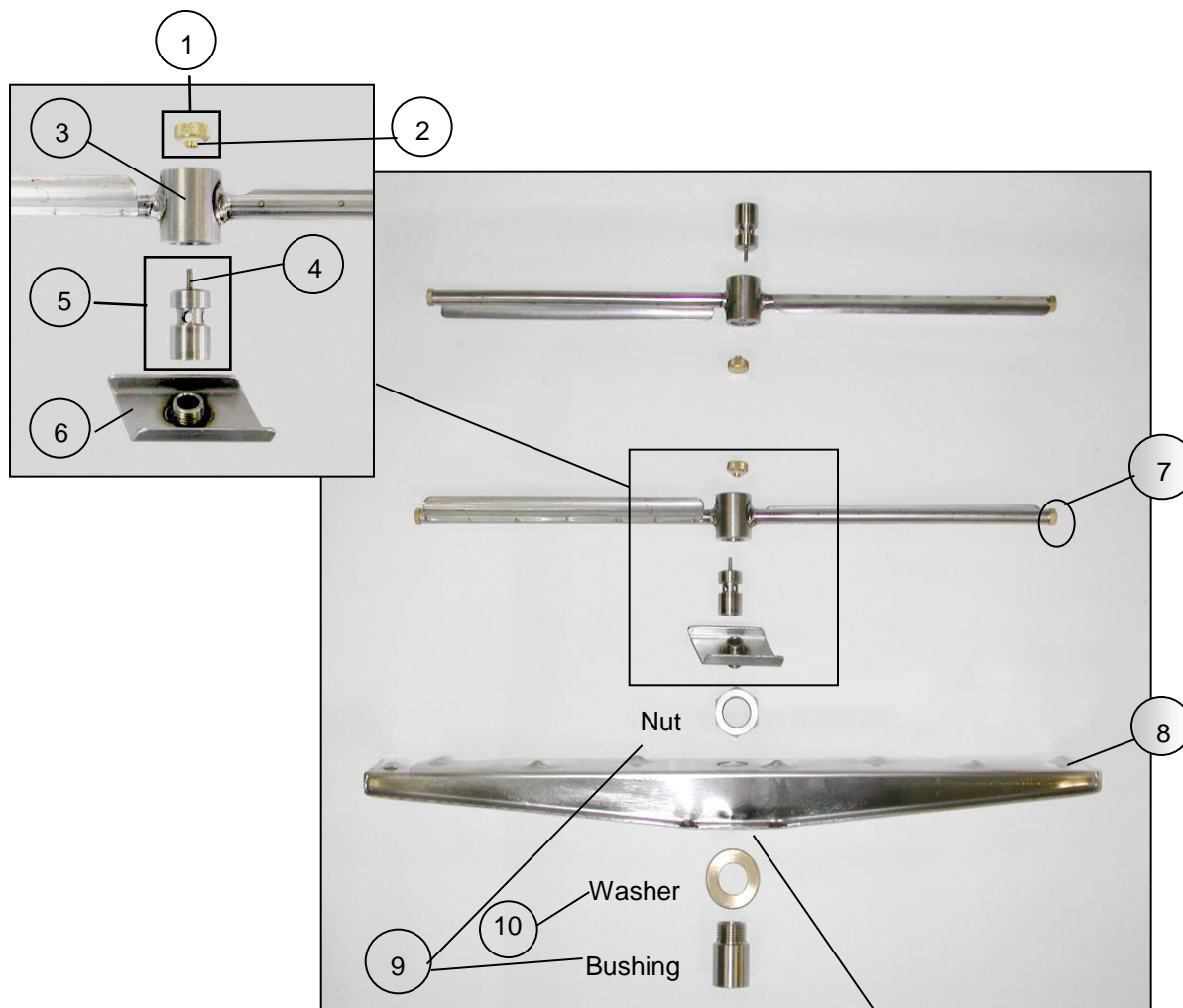
## SYSTÈME INTÉRIEUR

- 1) GP44.4 Washtube inox 33mm
- 2) GP35.8 Washsystem superior P25
- 2a) GP35.4 Rinse system superior P25
- 3) GP44.2 Conical spring for wash-pipe
- 4) GP44.3 Spring retainer ring brass
- 5) GP35.7 Washsystem inferior
- 5a) GP35.3 Rinse system inferior P25
- 6) GP35.71 Hex screw S/S M6x12
- 7) GP19.0 Serto boiler outlet 2 pcs 14-1/2"
- 8) GP35.01 Serto conical adaptor 1/2"
- 9) GP35.0 Dirt strainer booster outlet 25i
- 10) GP25.0 Booster 25i (see booster/strainer replacement)
- 11) GP94.4 Suds sensor probe; assy
- 12) GP94.41 Gasket for suds probe 1 1/4"x 13/16"
- 13) GP95.1 Water-level sensor probe; assy
- 14) GP15.0 Gasket "Garlock" 10mm
- 15) GP52.0 Filter to washmotor 25i
- 16) GP49.0 Overflow with O-ring 195mm 25i
- 17) GP51.0 O-ring for overflow
- 18) SW25.3 Booster drain screw M10x16
- 19) GP03.0 Gasket "Garlock" 1/2"
- 20) GP14.6 Injector M12x16; assy

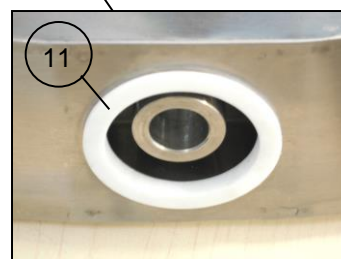


# RINSE & WASH ARM ASSEMBLY

## ASSEMBLAGE DU BRAS DE RINÇAGE ET DE LAVAGE

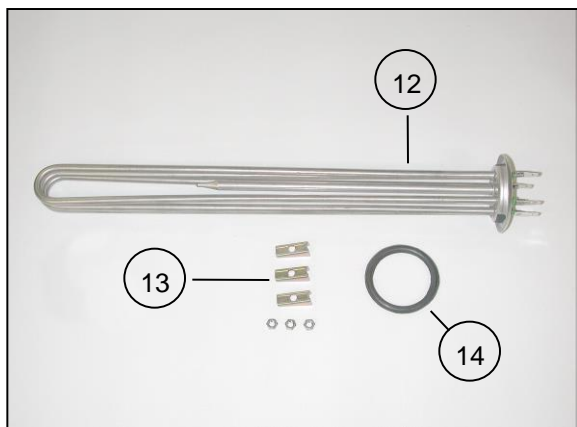
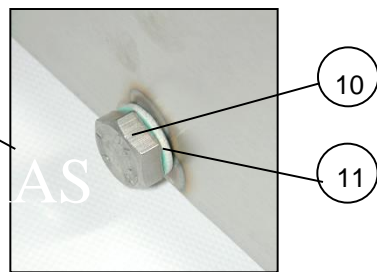
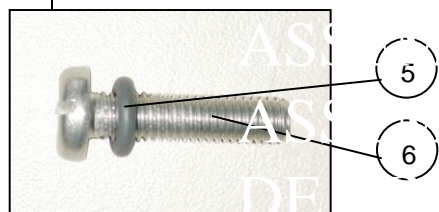
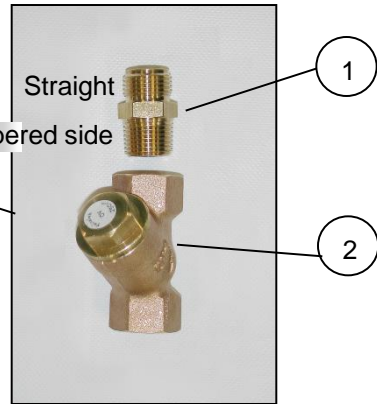
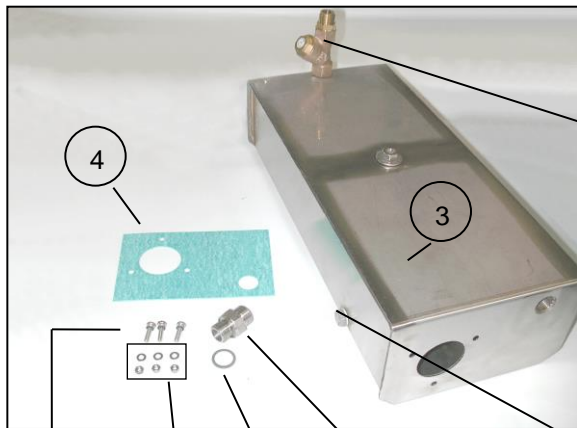


- 1) GP37.0 Nut for rinse arm brass; assy. (includes GP37.1)
- 2) GP37.1 Nylon washer
- 3) GP39.0 Rinse arm 25i & 65i
- 4) GP37.01 Rinse axle screw M3x12
- 5) GP36.1 Rinse axle 25i & 65i; assy. (includes GP37.01)
- 6) GP38.2 Lower lock plate w/nipple 25i
- 7) GP41.0 Threaded end plug rinse arm M9
- 8) GP45.0 Washarm inox 25i
- 9) GP42.0 Washarm bushing 25i
- 10) GP42.01 Washer
- 11) GP43.9 Nylon ring washarm





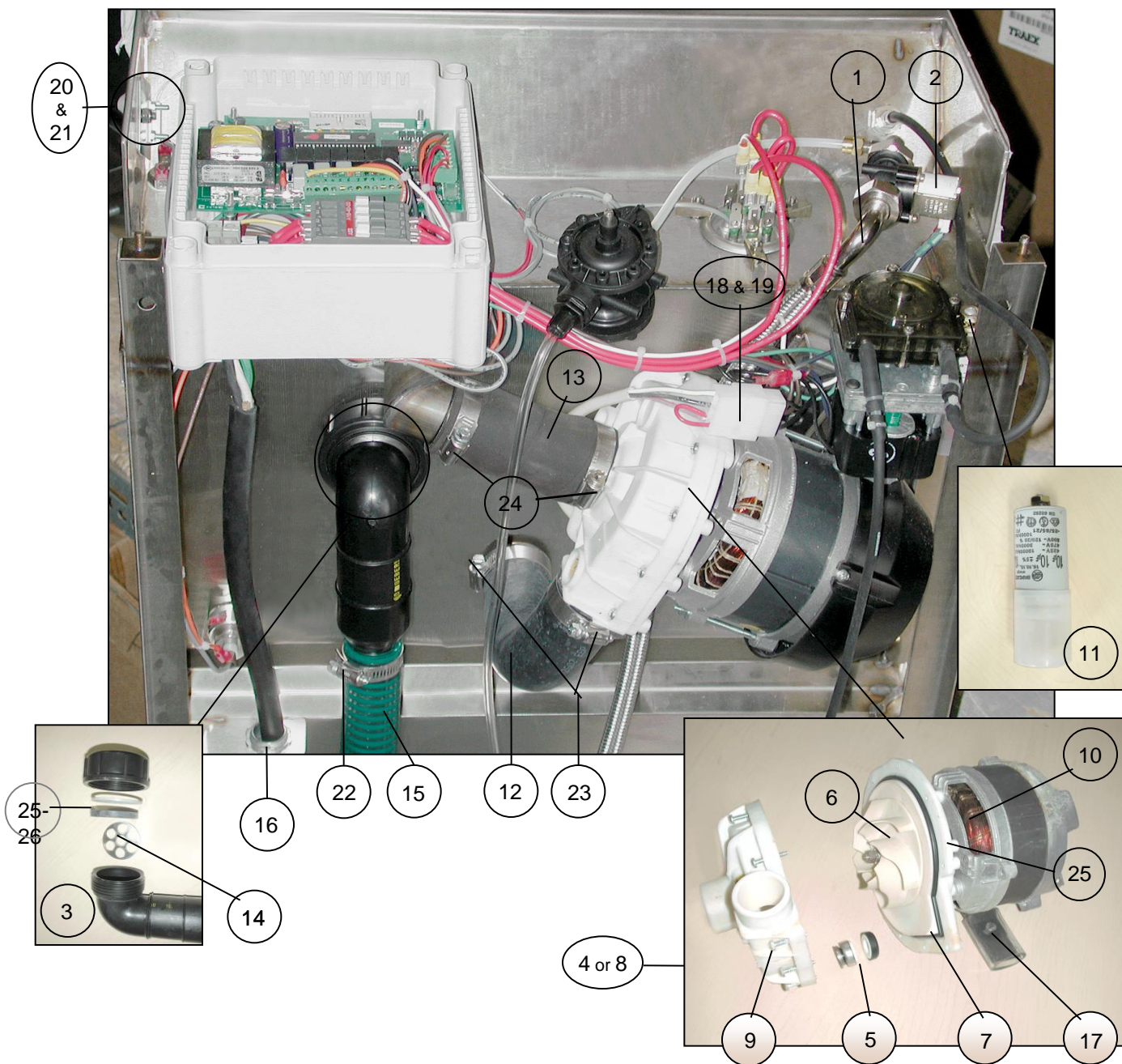
# BOOSTER SURCHAUFFEUR



- \*1) GP35.01 Serto conical adaptor 1/2"
- \*2) GP35.0 Dirt strainer booster outlet 25i
- 3) GP25.0 Booster 25i
- \*4) GP23.3 Gasket "Garlock" 110x175
- \*5) GP25.2 O-Ring VM-7710103-0006
- \*6) GP25.1 Screw for booster M5x20
- \*7) GP33.1 Hex nut M5 w/washer
- \*8) GP20.2 O-Ring for GP 20.1
- 9) GP20.1 Union CNS 1/2" male
- 10) SW25.3 Booster drain screw M10x1
- \*11) GP15.0 Gasket "Garlock" 10mm
- 12) GP31.0 Heater "EGO" 220V 6000W
- 13) GP33.0 Fastener brackets for "EGO"
- \*14) GP32.0 O-Ring to "EGO" Heater
- \*15) GP35.35 Strainer replacement Kit**  
SB20.0 Pressure regulator compl.

# FILLING, DRAIN & MOTOR PUMP SYSTEM

## SYSTÈME DE REMPLISSAGE, DRAINAGE ET POMPE-MOTEUR



# FILLING, DRAIN & MOTOR PUMP SYSTEM

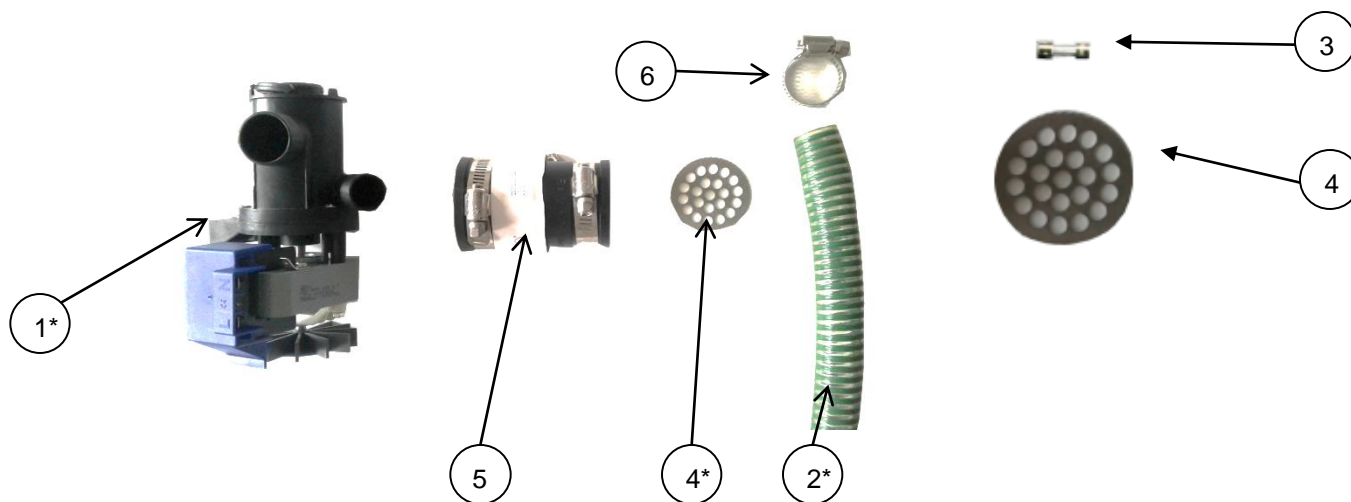
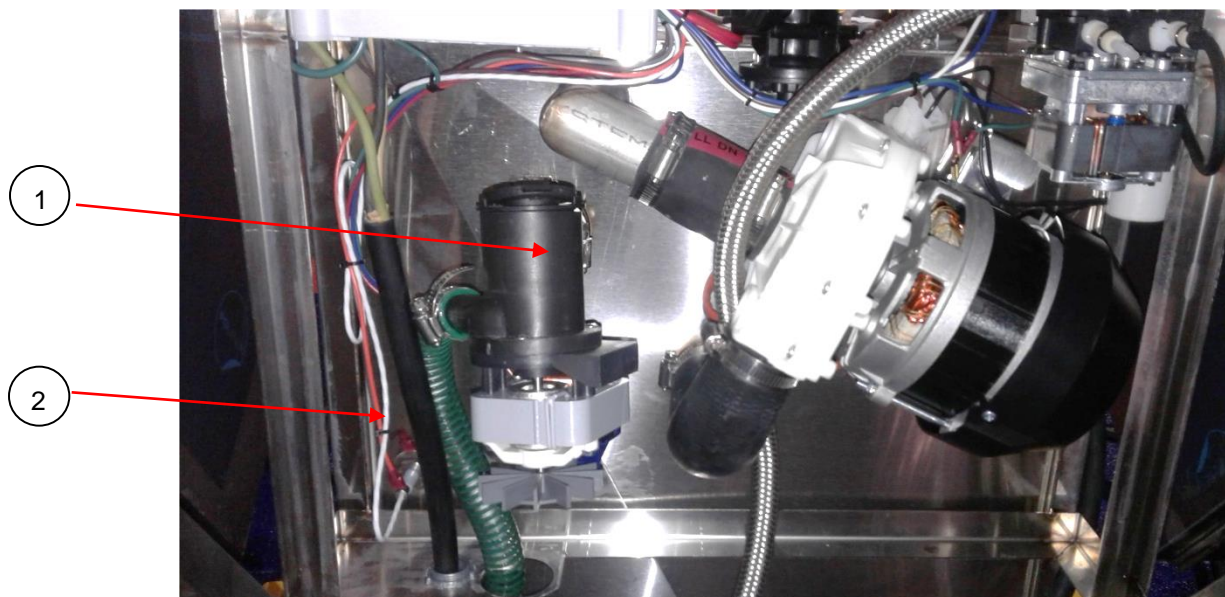
## SYSTÈME DE REMPLISSAGE, DRAINAGE ET POMPE-MOTEUR

- 1) GP01.0 Metal hose 1250mm
- 2) GP06.11M Single valve "Muller"
- 3) GP49.2 Reduction geberit drain  
(GP 81.31 Disk filter for drain NOT INCLUDED)
- 4) GP70.1 Motor pump 25 reconditioned (old motor pump must be returned)
- 5) GP70.2 Pump shaft seal 25
- 6) GP70.3 Pump impellor 25
- 7) GP70.4 Gasket pump housing 25
- 8) GP70.5 Swissh 25 pump/motor assy. NEW
- 9) GP70.61 Pump housing FIR 25
- 10) GP70.7 Ball bearing pump motor 25
- 11) GP73.5 Motor capacitor 10 micro 25
- 12) GP76.0 Pressure hose 25
- 13) GP77.0 Pump inlet hose 42mm
- 14) GP81.31 Disk filter for drain
- 15) GP81.5 1-1/4" Md Pvc solution W Wa
- 16) SW02.3 3/4" strain relief
- 17) SW04.0 Motor bracket S/S
- 18) SW04.1 Motor connector male  
SW04.11 AMP plug (male)
- 19) SW04.2 Motor connector female  
SW04.21 AMP plug (female)
- 20) SW05.3 Reed door switch C&K 30V
- 21) SW05.31 Bracket for reed switch
- 22) SW79.1 HS-20 drain hose clamp 14-44mm
- 23) SW79.2 HS-24 pump hose clamp 27-51mm
- 24) SW80.0 HS-28 pump hose clamp 33-57mm
- 25) GP70.62 Pump support FIR 25
- 26) GP49.25 O-ring set for geberit drain





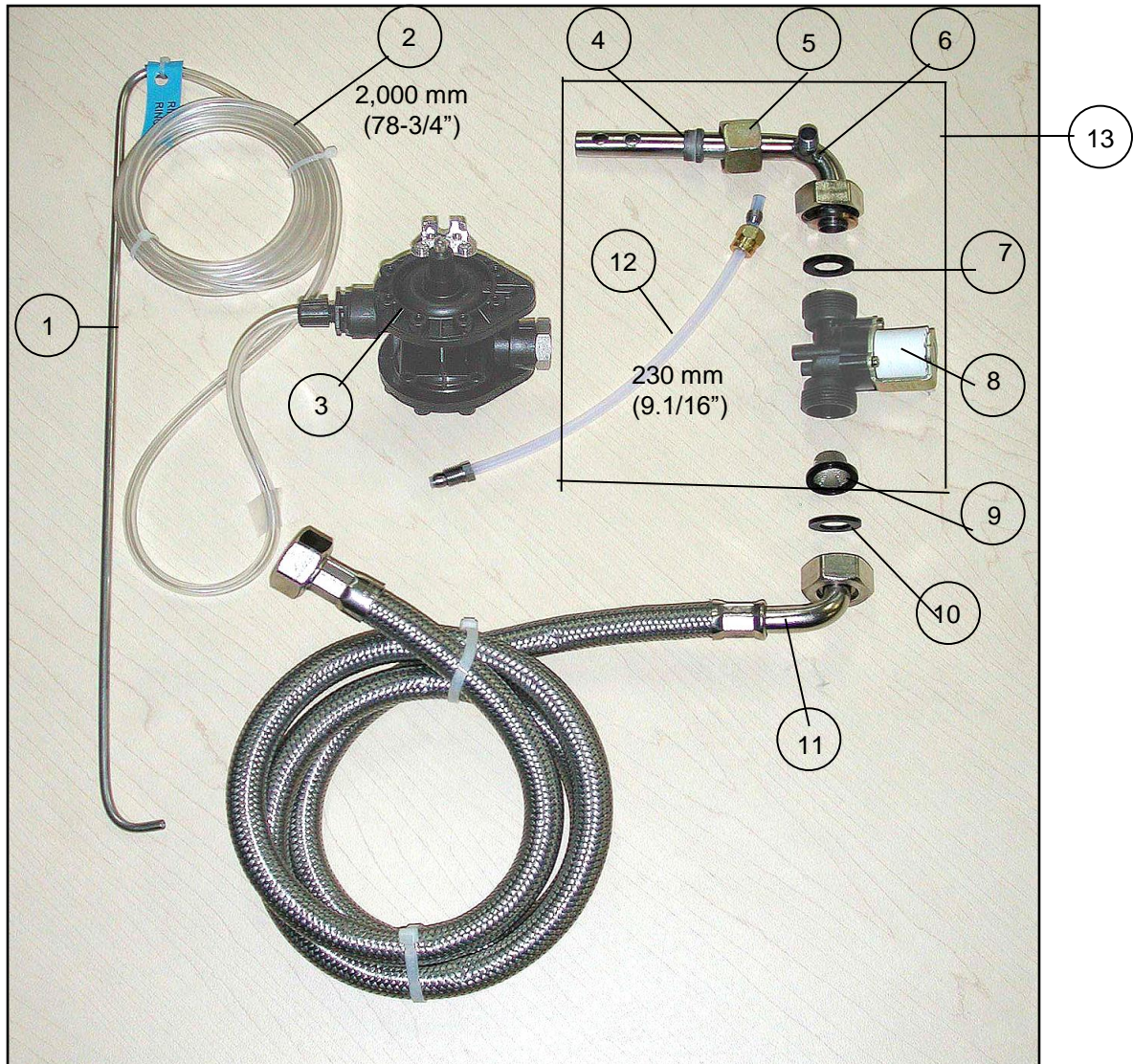
# DRAIN PUMP POMPE DE DRAINAGE (option)



- 1) GP81.21 Drain Pump / Pompe de drainage
- 2) GP81.4 Hose for drain pump / Tuyau pour pompe de drainage 3/4"
- 3) SW93.15 Fuse 1.5 amp for drain pump / Fusible 1.5 amp pour pompe
- 4) GP81.25 Drain filter for drain pompe / Filtre pour pompe de drainage
- 5) 1 1/2" to 1 1/4" rubber adapter for drain pump
- 6) SW79.1 HS-16 Drain hose clamp / Collier de serrage

\* GP81.2 Drain pump complete assy. / Pompe de drainage complete.

# FILLING & RINSE SYSTEM SYSTÈME DE REMPLISSAGE ET DE RINÇAGE

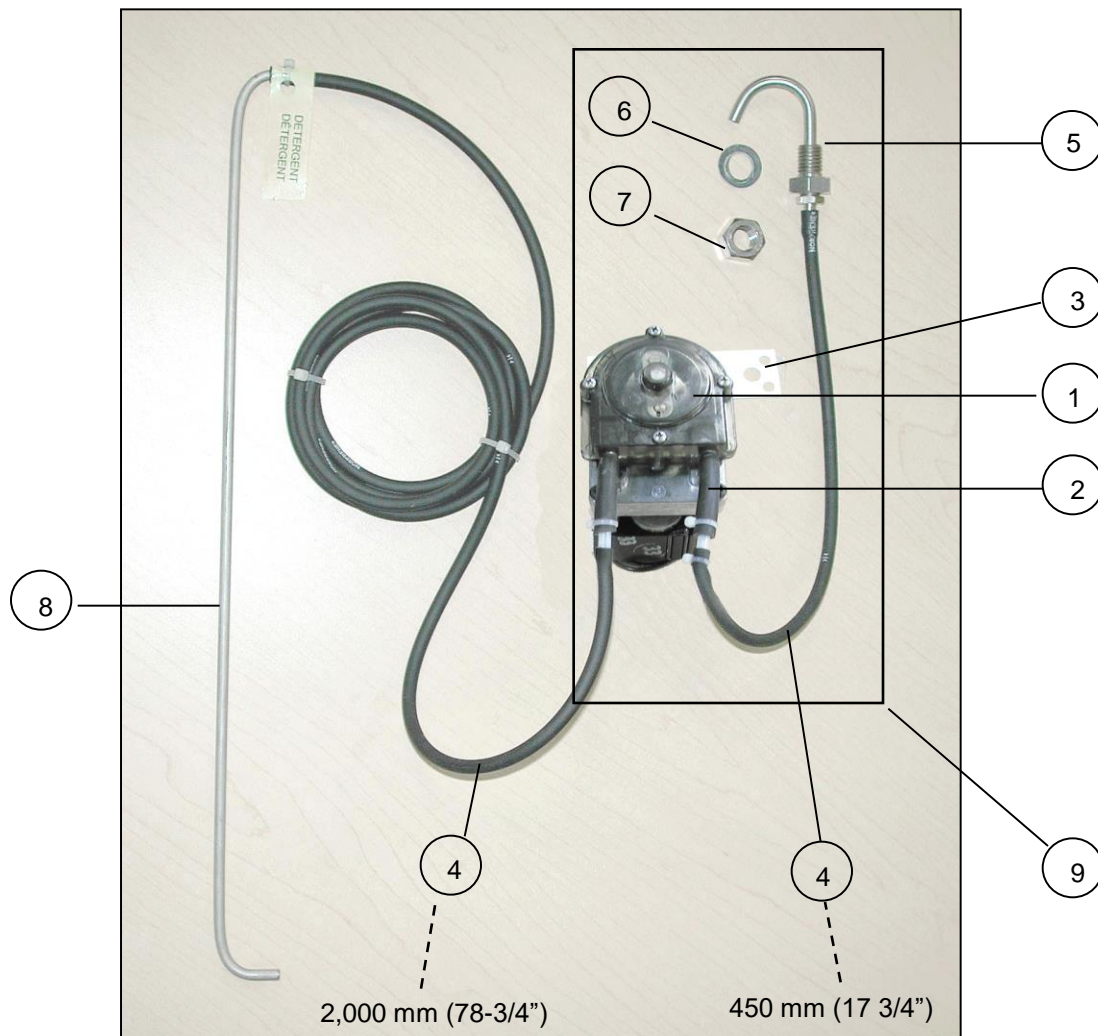


- |   |   |
|---|---|
| 1) GP85.1 Detergent/Rinse pipe Inox 420 mm/5 mm | 8) GP06.11M Single valve "Muller"                       |
| 2) GP85.3 PVC rinse 5 mm                        | 9) GP02.0 Filter 3/4" (Obsolete) Inserted with GP06.11M |
| 3) GP83.6 Rinse pump synthetic                  | 10) SW03.2 Gasket rubler 5/8"                           |
| 4) GP20.3 Tightening ring 14 mm 71DPR 14S       | 11) GP01.0 Metal hose 1,250 mm                          |
| 5) GP20.4 Attachment screw E0 M15 PL            | 12) GP83.61 PTFE rinse pump tube; assy                  |
| 6) GP19.9 Boiler entry tube 14 mm flanged       | 13) SW06.2 * Solenoid replacement kit & pump (partial)  |
| 7) SW03.3 Gasket "Garlock" 5/8"                 |   |

\* See Detergent Dispensing System



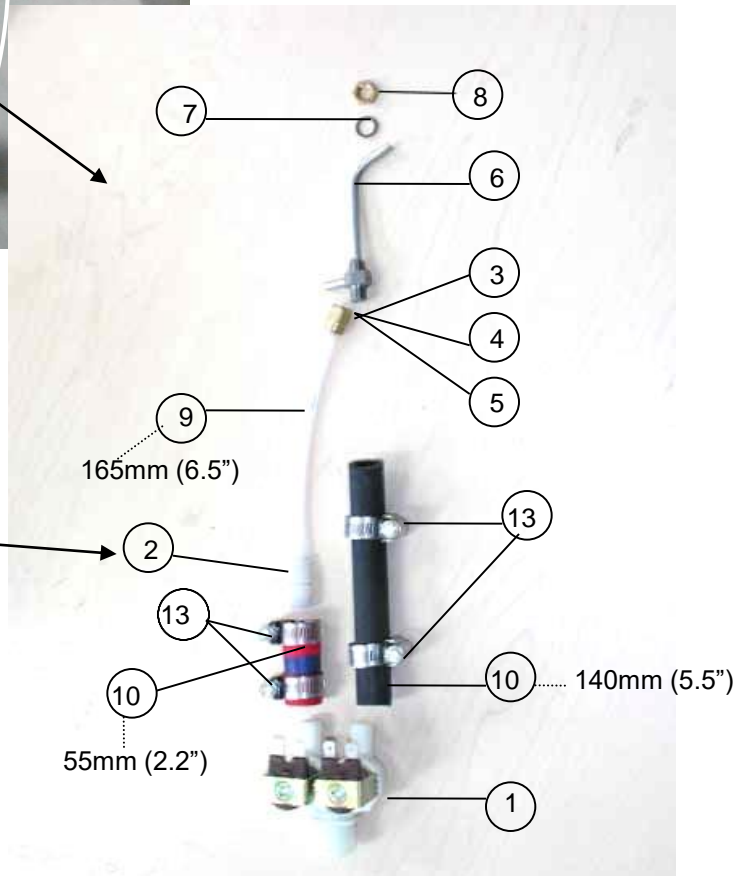
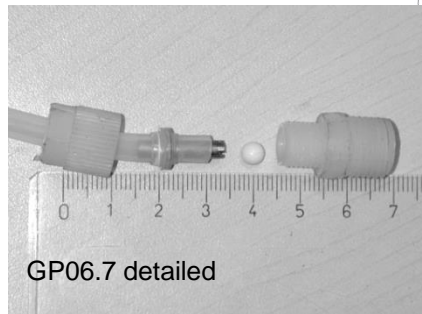
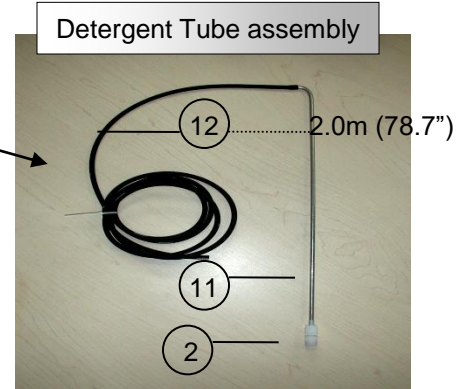
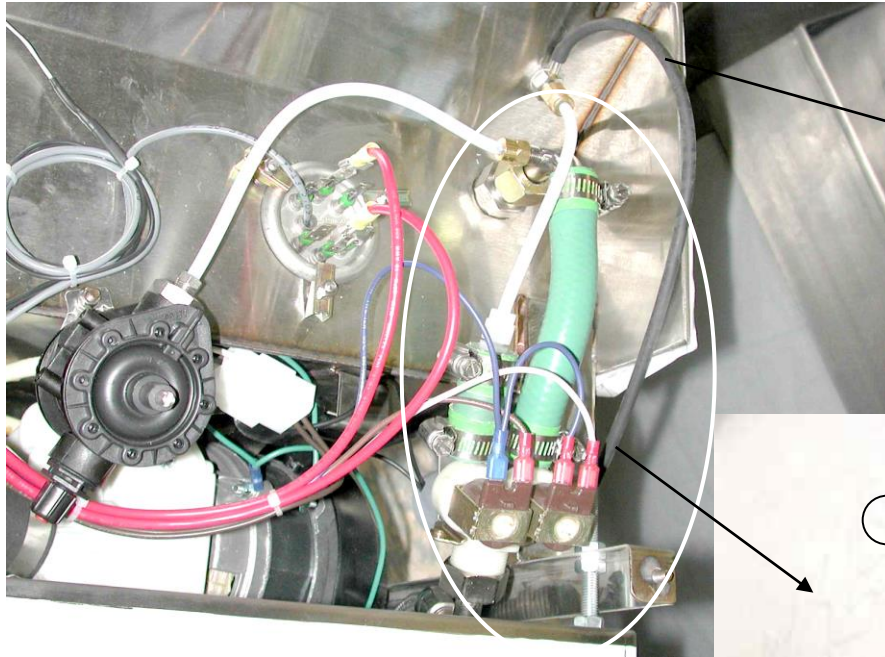
# DETERGENT DISPENSING SYSTEM SYSTÈME DISTRIBUTEUR DE DÉTERGENT



- 1) SW14.30 Detergent pump "BETA"
- 2) SW14.31 Pump tubing "BETA"
- 3) SW14.32 Detergent pump bracket "BETA"
- 4) GP85.4 Norton norprene detergent hose
- 5) GP14.6 Injector M12 x 16; assy
- 6) GP03.0 Gasket "Garlock" 1/2"
- 7) GP14.61 Nut M12
- 8) GP85.1 Detergent/Rinse pipe Inox 420 mm/5 mm
- 1) \*SW06.2 Solenoid replacement kit & pump (partial)

\* See also Filling & Rinse System/Voir aussi Système de remplissage et de rinçage

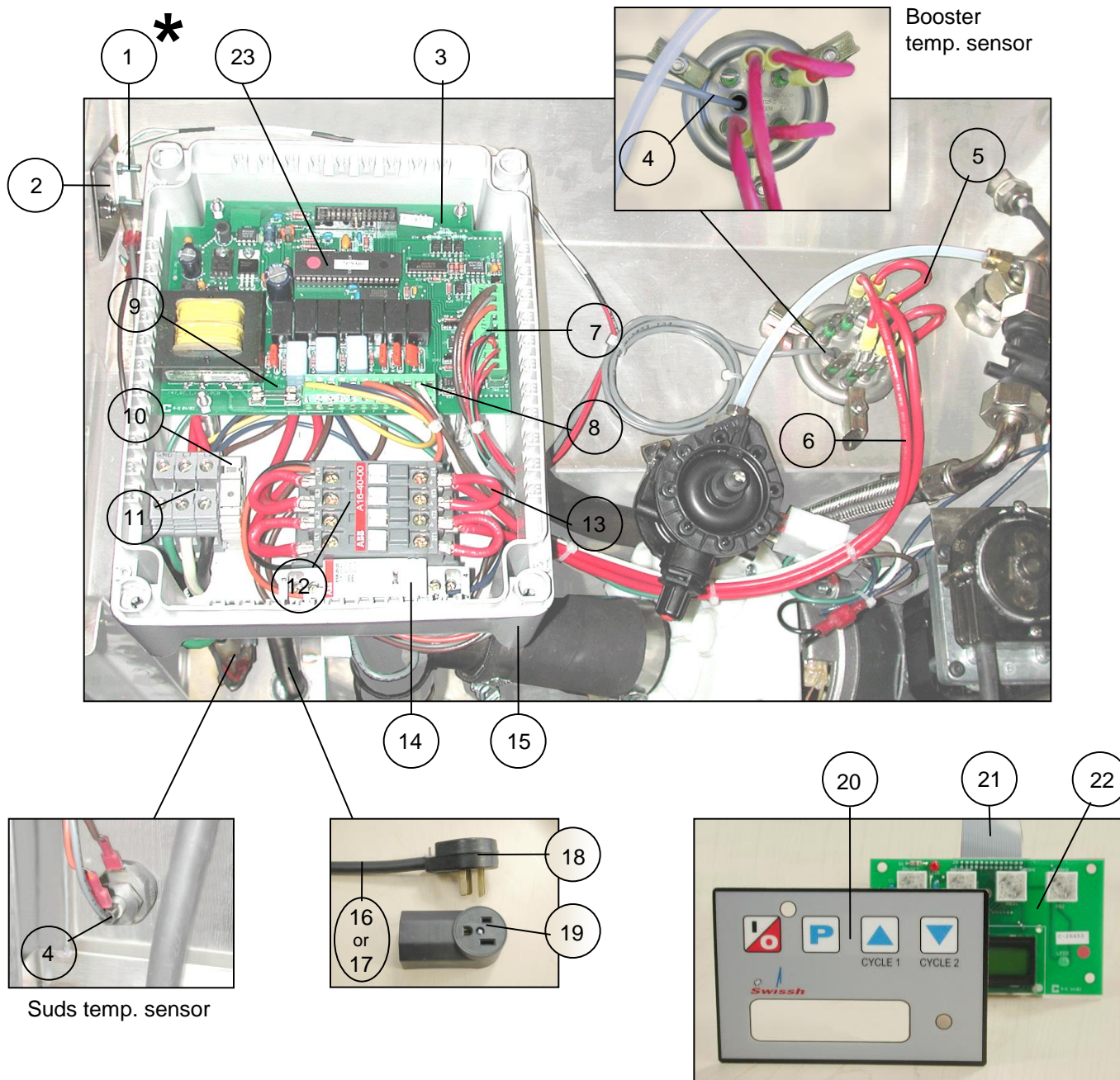
# DOUBLE VALVE "EATON" WITH DETERGENT INJECTOR DOUBLE VALVE "EATON" AVEC INJECTEUR DE DÉTERGENT



- 1) GP06.5 Double valve "Eaton"
- 2) GP06.7 Check-valve for injector line
- 3) GP13.6 S/S Compression fitting Serto
- 4) GP13.7 S/S Sleeve Compress. Fitting Serto
- 5) GP13.9 Serto Nut PTFE 21-6-1/8"
- 6) GP14.0 Injector "Swiss" Inox
- 7) GP15.0 Gasket "Garlock" 10mm
- 8) GP16.0 Nut for injector "Swiss"
- 9) GP17.6 Tubing PTFE 6mm
- 10) GP78.8 Topsil Pressure hose ID13 x OD26
- 11) GP85.5 Detergent pipe & check valve
- 12) GP85.4 Norton norprene detergent hose
- 13) SW79.0 HAS-8 Solenoid clamp



# ELECTRONIC SYSTEM SYSTÈME ÉLECTRONIQUE



# ELECTRONIC SYSTEM

# SYSTÈME ÉLECTRONIQUE

- 1) \* SW05.3 Reed door switch C&K 30V (for Swissh 25PLC series only)
- 1) \* SW05.0 Door switch magnetic (for Swissh 25i & 25i Plus series only)
- 2) SW05.31 Bracket for reed switch
- 3) GP94.9 Electronic control unit DWC-2002
- 4) GP94.51 Temperature sensor for DWC
- 5) SW97.32 Heater element jumper 10mm
- 6) SW97.3 Heater cable 25 450mm
- 7) GP94.61 PCB connector (9pin) for DWC
- 8) GP94.71 PBC connector (12pin) for DWC
- 9) SW93.0 Fuse 1A (slow blow) 20mm
- 10) SW97.22 Bornier stopper Euro-Rail
- 11) SW97.21 Bornier "Entrelec" M10x10
- 12) GP97.41 Contactor "ABB" A16-40
- 13) SW97.31 Contactor jumper 10mm
- 14) SW97.01 Motor relais ABB ESB 20A
- 15) SW97.5 Legrand electronic box
- 16) SW02.4 Power cord AWG 10-3, 1 phase
- 17) SW02.41 Power cord AWG 10-4, 3 phase
- 18) SW02.1 Plug (male)
- 19) SW02.2 Plug (female)
- 20) SW01.01 Membrane electronic 2002
- 21) GP94.92 Ribbon cable (bus) for DWC-2002
- 22) GP94.91 Remote control board for DWC-2002
- 23) GP94.86 MCU-DWC-2002

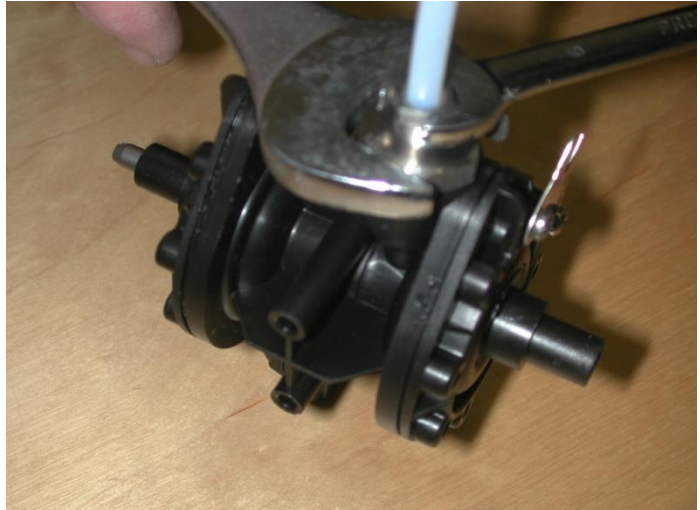


# RINSE PUMP AND RINSE TUBE FILTER POMPE DE RINCAGE ET FILTRE POUR TUBE INOX DE RINCAGE

## INSTRUCTIONS

When installing a rinse pump, hold the large stainless steel nut with a 7/8" key when tightening the compression nut (10mm key). If not, the housing of the rinse pump can crack.

Pendant l'installation de la pompe de rinçage, tenir la grande noix inox avec une clé 7/8" et serrez la noix à compression avec une clé de (10mm), sinon le boîtier craquera.



.....

We suggest to install a filter on the rinse tube inlet (if not already installed) to protect the rinse pump from dirt.

Nous vous conseillons d'installer un filtre à l'entrée du tube inox de rinçage (si ce n'est pas déjà installé) pour protéger la pompe des saletés

GP85. 11  
Filter for rinse inox tube  
Filtre de rinçage pour tube à inox

